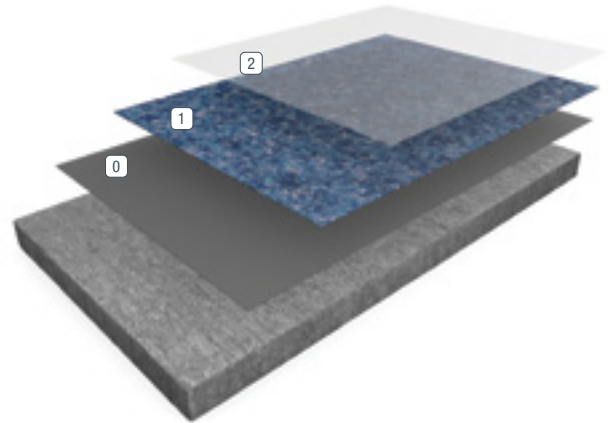


## RESUFLOOR™ DSS

**Sherwin-Williams Resufloor DSS** is a 3-layer system consisting of a prime coat, a decorative stone slurry and a topcoat. Compared to traditional 5- to 7-layer decorative floors, this system requires fewer installation steps. It helps minimize facility downtime and enables faster resumption of normal operations. The system consists of a prime coat of pigmented Resufloor® DSP, followed by a slurry coat of Resufloor® DSS, finished with a UV-light stable urethane in either a satin finish or a gloss finish with glass beads for added texture.



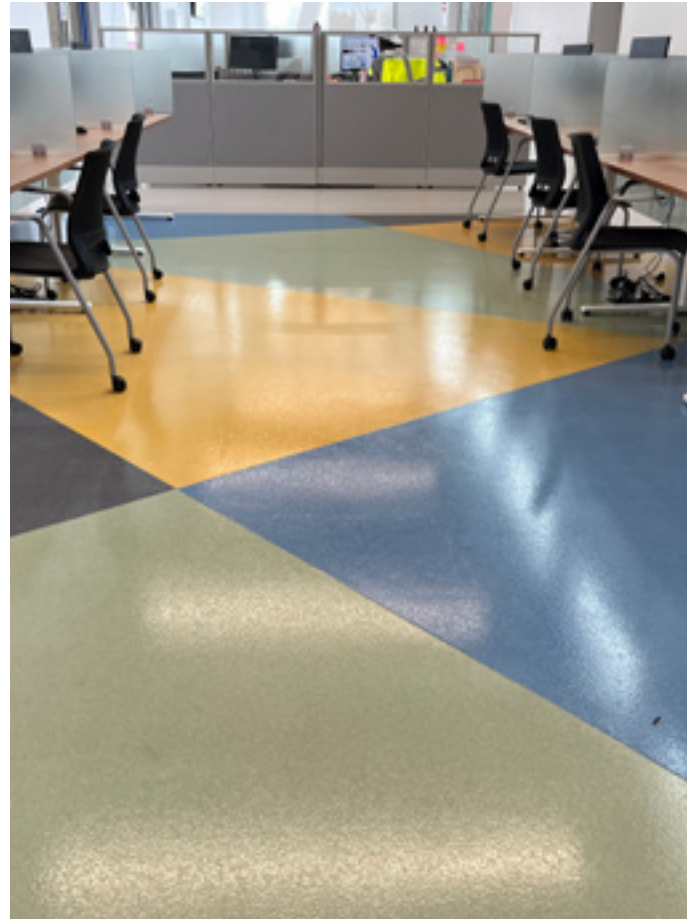
- ① Body Coat
- ② Topcoat

### BENEFITS

- Quick installation and fast turnaround
- Seamless, easy to clean and maintain
- Durable, wear- and slip-resistant
- Chemical- and stain-resistant
- Customizable color
- Natural stone appearance
- Unique look with stunning visual depth
- Minor repairs, if needed, are virtually invisible

### USES

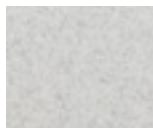
- Hotels and lobbies
- Showrooms and retail outlets
- Classrooms, offices and corridors
- Hospitality venues and restaurants
- Healthcare facilities and labs
- Restrooms and locker rooms
- Arenas and sport complexes



## FEATURED COLORS



Celestial Blue



Coastline



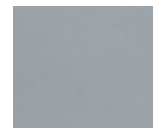
Frosted Pine



Geranium Red



Midnight Sky



Misty Gray



Pacific Blue



Plum



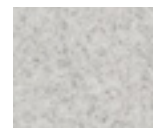
Smokey Walnut



Sunset Sky



Sunshine



Volcanic Ash

Please see Resuflo<sup>™</sup> DSS Color Card to see the collection of standard blends or use our Flooring Visualizer Tool to see your color choice in an existing environment at [floorvisualizer.sherwin-williams.com](https://floorvisualizer.sherwin-williams.com). This reproduction approximates the actual color. Factors such as the type of product, degree of gloss, texture, size and shape of area, lighting, heat or method of application may cause color variance. Contact your Sherwin-Williams representative for details.

## ABOUT CHEMICAL RESISTANCE

Sherwin-Williams High Performance Flooring offers a broad range of systems to accommodate nearly every industrial, commercial and institutional setting. Each flooring system includes a standard chemical-resistant topcoat or surface proven to perform under typical conditions.

Important considerations:

- The combination of cleaning solutions, sanitizing chemicals, processing substances and products found in any operational setting is unique.
- Knowing exactly which materials are present – as well as their concentrations and typical exposure times before cleanup – is critical for proper flooring system selection.
- During the specification process, a flooring system's standard chemical-resistant topcoat may get replaced with one better suited to unique facility conditions.

The ability of a flooring system to perform as designed relies heavily on proper selection. Matching each use case with the right chemical-resistant flooring is key to a having a facility looking great and functioning at peak level over the long term.

See our Chemical Resistance Guide and other technical resources on our website. Connect with a Sherwin-Williams High Performance Flooring expert for help with specifying an optimal flooring system for your facility.

## TYPICAL PHYSICAL PROPERTIES

### Abrasion Resistance

ASTM D4060  
Taber Abraser CS-17 Wheel,  
1,000 g load, 1,000 cycles

51 mgs/loss

Result based on independent lab  
testing of Resutile<sup>™</sup> HTS

### Hardness, Shore D

(at 24 hours)  
ASTM D2240

80-85 @ 0 sec | 75-80 @ 15 sec

### Tensile Strength

ASTM D2370

8,000 psi

### Adhesion to Concrete

ASTM D4541

>1250 psi  
(no coating adhesion failure)

### Adhesion to Concrete

ASTM D7234

>480 psi  
(max psi machine can register)

### Flammability

ASTM D635

182 mm / min

## THE SHERWIN-WILLIAMS DIFFERENCE

Sherwin-Williams High Performance Flooring delivers world-class industry subject matter expertise, unparalleled technical and specification service, and unmatched regional commercial team support to our customers around the globe.

### United States & Canada

[sherwin-williams.com/resin-flooring](https://sherwin-williams.com/resin-flooring)  
[swflooring@sherwin.com](mailto:swflooring@sherwin.com)