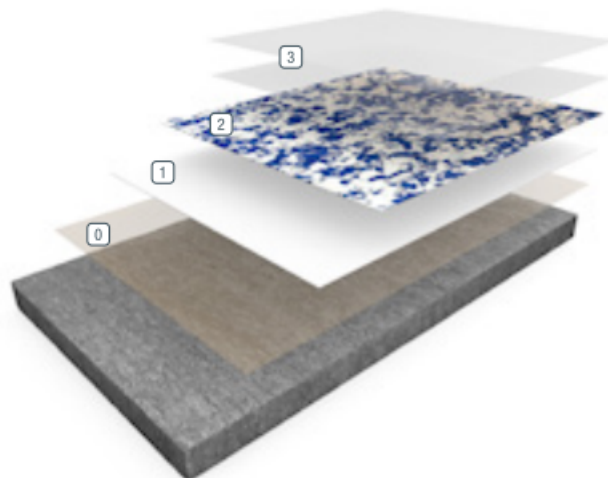


RESUFLOOR™ DECO FLAKE SB

Sherwin-Williams Resuflor Deco Flake SB

is a versatile, nominal 1/16th-inch thick, mosaic patterned floor covering. Decorative vinyl chips are incorporated with clear or pigmented epoxy and sealed with a clear polyurethane finish. The innovative chemistry imparts a finished floor with excellent chemical and abrasion resistance.



0 Primer

2 Broadcast

1 Basecoat

3 Grout/Seal Coat

BENEFITS

- Aesthetically pleasing appearance
- Limitless color options
- Seamless and sanitary
- Chemical- and stain-resistant
- Satin finish; high-gloss finish options
- Contributes to LEED® v4 credits

USES

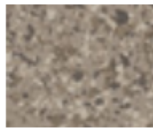
- Nursing homes and healthcare facilities
- Clean rooms and pharmaceutical facilities
- Retail and office buildings
- Locker rooms and restrooms
- Schools and cafeterias



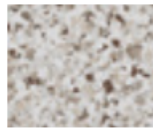
FEATURED COLORS



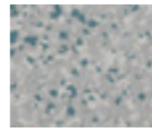
Flaxseed



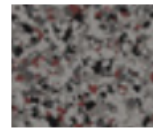
Ocelot



Almond Milk



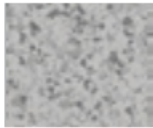
Agave



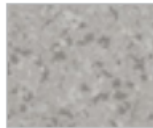
Kingsnake



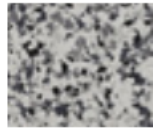
Korat



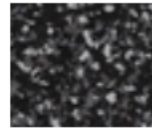
Chinchilla



Limestone



Greyhound



Black Bean



Speckled Ash



Moon

Unlimited standard and custom blends available. Please see Resufloor Deco Flake SB Color Cards for the extensive collection of standard blends or use our Flooring Visualizer Tool to create your own custom blend at floorvisualizer.sherwin-williams.com. This reproduction approximates the actual color. Factors such as the type of product, degree of gloss, texture, size and shape of area, lighting, heat or method of application may cause color variance. Contact your Sherwin-Williams representative for details.

ABOUT CHEMICAL RESISTANCE

Sherwin-Williams High Performance Flooring offers a broad range of systems to accommodate nearly every industrial, commercial and institutional setting. Each flooring system includes a standard chemical-resistant topcoat or surface proven to perform under typical conditions.

Important considerations:

- The combination of cleaning solutions, sanitizing chemicals, processing substances and products found in any operational setting is unique.
- Knowing exactly which materials are present – as well as their concentrations and typical exposure times before cleanup – is critical for proper flooring system selection.
- During the specification process, a flooring system's standard chemical-resistant topcoat may get replaced with one better suited to unique facility conditions.

The ability of a flooring system to perform as designed relies heavily on proper selection. Matching each use case with the right chemical-resistant flooring is key to a having a facility looking great and functioning at peak level over the long term.

See our chemical resistance Guide and other technical resources on our website. Connect with a Sherwin-Williams High Performance Flooring expert for help with specifying an optimal flooring system for your facility.

TYPICAL PHYSICAL PROPERTIES

Color	Custom Color Blends Available
Abrasion Resistance ASTM D4060, CS-17 Wheel, 1,000 cycles	18 mg/loss Result based on independent lab testing of Resutile HTS
Adhesion ASTM D4541	450 psi concrete failure
Adhesion ASTM D7234	732 psi concrete failure
Flammability ASTM D635	182 mm/min
Flammability ASTM C = Mortar System ASTM D = Resin only	Self-Extinguishing over concrete

THE SHERWIN-WILLIAMS DIFFERENCE

Sherwin-Williams High Performance Flooring delivers world-class industry subject matter expertise, unparalleled technical and specification service, and unmatched regional commercial team support to our customers around the globe.

United States & Canada

sherwin-williams.com/resin-flooring
swflooding@sherwin.com